

High Tech Technology AI-Eye Camera & Smartbox

Smarter Security Starts Here

High Tech Technology's AI-Eye cameras and AI-Eye Smartboxes are versatile and intelligent security solutions. Our products empower users to receive real-time security alerts, stream live footage, and access both motion-triggered and recorded video playback, making it an all-in-one assistant for modern surveillance needs.



AI-Eye Camera

An all-in-one intelligent security camera equipped with on-device AI for real-time object detection, behavior monitoring, and environmental safety alerts. Designed for next-generation surveillance with edge processing and instant event response.



AI-Eye Smartbox

A cost-effective AI upgrade for legacy surveillance systems. AI-Eye Smartbox brings intelligent analytics to existing camera networks without replacing the cameras themselves. Simply integrate the AI-Eye Smartbox into your system to unlock advanced AI features across your entire setup.

Features



Full HD Resolution

Capture clear, detailed footage with 1920 x 1080 Full HD video quality, ensuring reliable image clarity in all environments.



Fast Ethernet with PoE+

Supports 10/100 Mbps Ethernet with Power-over-Ethernet (PoE+) for simplified setup and stable data + power transmission through a single cable.



On-Device AI

Embedded AI with deep learning enables real-time object detection directly on the device, eliminating latency and reducing cloud dependency.



Instant Analysis

Each event is instantly analyzed to trigger smart recording and automated responses, minimizing delay and improve accuracy.



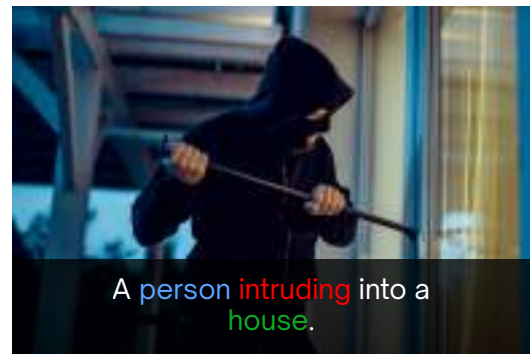
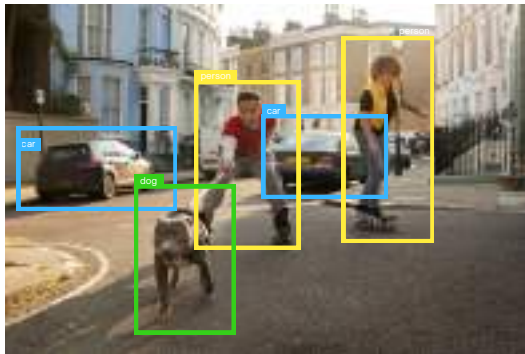
Real-Time Local Monitoring

Seamless real-time video access within your local network—ideal for secure premises monitoring without relying on external servers.

Applications

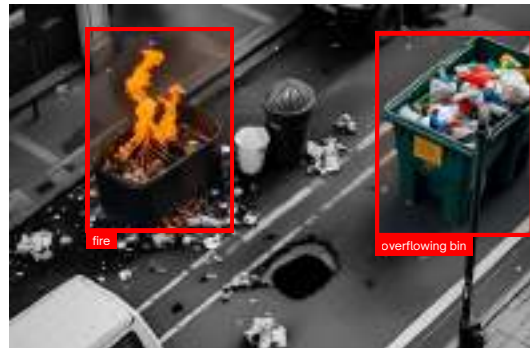
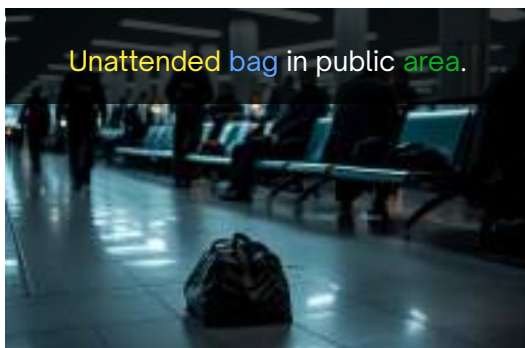
Object & Intrusion Detection

Our products support real-time detection of people, vehicles, and animals. With advanced perimeter protection and cross-line detection, it identifies unauthorized entry, monitors restricted zones, and flags abnormal activity with high precision.



Environmental Hazard Detection

Designed for safety-critical environments, our product detects fire, smoke, oil, water, and gas leaks. It also recognizes blocked evacuation routes, overflowing trash bins, and left-behind objects—ensuring proactive risk management in dynamic settings.



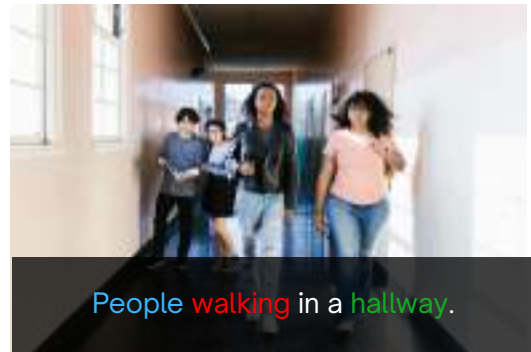
Personal Safety Gear Compliance

Built-in AI scans for safety equipment compliance, verifying the presence of hard hats, masks, reflective gear, safety equipment, and work clothes. Ideal for construction, manufacturing, and industrial settings where visual PPE checks are essential.



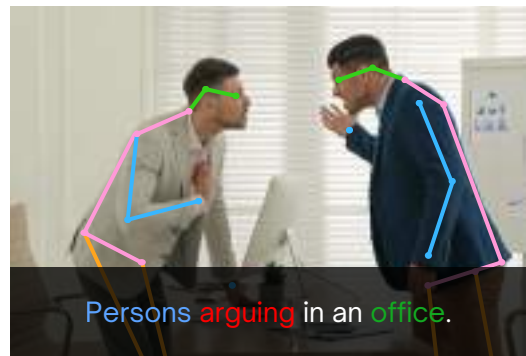
People Counting & Overcrowding Alerts

Monitor occupancy levels with accurate people counting and area entry/exit detection. The system triggers alerts for crowding and capacity limits, helping enforce health, safety and crowd-control protocols.



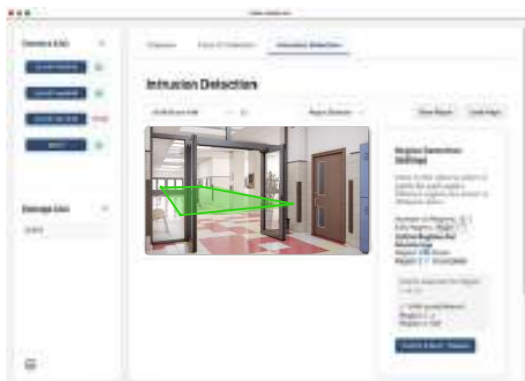
Behavior Recognition & Anomaly Alerts

The system identifies behavioral cues like sleeping, absence, falls, smoking, phone usage, and aggressive motion. By flagging unusual activity (e.g., climbing or fighting), it enhances safety in public, corporate, and care facility environments.



Smart Alerts & Custom Rules

Customize detection rules for different zones and use cases, from motion-triggered recordings to smart alerts based on specific activities. Supports instant video tagging and automated event classification.



Contact Us Today

High Tech Technology Ltd.

Unit 713, 7/F, 12W, 12 Science Park West Avenue,
Hong Kong Science Park, Shatin, NT, HK

Contact Information

Phone: +852 3619 5375 | Email: httadmin@hightt.com | Website: www.hightt.com